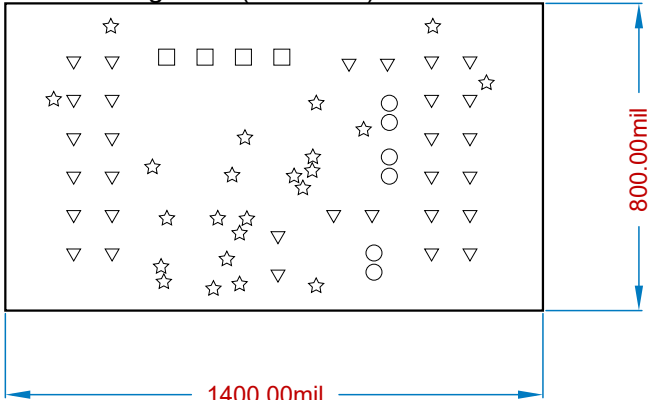


Drill Drawing View (Scale 2:1)



Drill Table

| Symbol | Count | Hole Size | Plated |
|--------|-------|-----------|--------|
| ○ | 6 | 27.56 | Plated |
| ▽ | 30 | 41.34 | Plated |
| □ | 4 | 43.31 | Plated |
| ☆ | 23 | 10.00 | Plated |


All other hole tolerances are +/-0.003

Fabrication Notes

- IPC Performance Class 2.
Fabricate in accordance with current IPC-6012.
Inspection must meet or exceed requirements of current IPC-A-600.
- All materials must be RoHS compliant. (RoHS 3, EU Directive 2015/863)
- FR-4 (170 Tg) laminate materials not otherwise specified must meet specifications for one or more of:
IPC-4101 /99 /102 /124 /126 /128 /129 /130 /131
- Layer buildup, materials, surface finishes, and coating colors are shown in layer stack table.
Copper weights listed are finished (after all plating steps).
Thicknesses shown in stackup table for legend (silkscreen), solder mask, and surface finish layers are suggested FOR REFERENCE ONLY; all requirements specified in IPC-6012 shall prevail.
- Note finished copper thickness of 1.4 mils (1 oz.).
- Finished board thickness: 57.49 mils+/- 10%.
- Detailed stackup construction is proposed FOR QUOTATION PURPOSES only.
Vendor to provide preferred stackup requirements for incorporation into final production drawing.
- Vendor may trim legend marking near solderable areas as necessary.
Vendor may remove solder mask slivers or open solder mask apertures as necessary.
- Vendor to break all sharp edges and sand any burrs flush with edges.
- Drill according to provided drill file.
Finished hole sizes not otherwise toleranced may follow IPC-2222.
Any hole of type "via" not otherwise toleranced may have negative tolerance equal to diameter.
- IPC-9252 electrical test is required.
Test MUST use supplied IPC-D-356 netlist as master source data.
- FINISH:
All exposed conductive pattern areas not covered with solder mask or other plating shall be ENIG or HASL
- Silk screen, top layer and bottom layer, White.
- Solder mask LPI, top layer and bottom layer, Blue.

THE INFORMATION CONTAINED IN THIS DRAWING IS THE SOLE PROPERTY OF RENESAS. ANY REPRODUCTION IN PART OR AS A WHOLE WITHOUT THE WRITTEN PERMISSION OF RENESAS IS PROHIBITED.

PROPRIETARY AND CONFIDENTIAL

| | | | | | | | | |
|--|----------------------|---|-----------|---|------------------------------|---|--|---------------|
| UNLESS OTHERWISE SPECIFIED: | | NAME | DATE |  | | | | |
| DIMENSIONS ARE METRIC TOLERANCES: FRACTIONAL± ANGULAR: MACH± BEND ± TWO PLACE DECIMAL ± THREE PLACE DECIMAL ± | | DRAWN | HVR | | | 11/6/2024 | | |
| | | CHECKED | KK | 6/14/2023 | 710 Slater Road Suite 200 | Morrisville NC 27703 | | |
| | | ENG APPR. | | | | | | |
| | | INTERPRET GEOMETRIC TOLERANCING PER: | MFG APPR. | | | TITLE QCIOT-ZSSC3123EVZ PMOD Fabrication | | |
| MATERIAL | Q.A. | | | | | | | |
| | COMMENTS: | | | SIZE B | | DWG. NO. QCIOT-ZSSC3123EVZ | | REVISION A |
| FINISH | | | | | | | | |
| | DO NOT SCALE DRAWING | | | SCALE: 1:1 | | SHEET 1 OF 3 | | |

DO NOT SCALE DRAWING

A


B

C

D

Layer Stack Legend

| Material | Layer | Thickness | Dielectric Material | Type | Gerber |
|---------------------------|-----------------------|-----------|---------------------|----------------|--------|
| | Top Overlay | | | Legend | GTO |
| Surface Material | Top Solder | 1.00mil | SM-003 | Solder Mask | GTS |
| Nickel, Gold | Top Surface Finish | 0.16mil | | Surface Finish | |
| CF-004 | Top Layer | 1.38mil | | Signal | GTL |
| Prepreg | | 3.10mil | PP-008 | Dielectric | |
| Prepreg | | 3.80mil | PP-013 | Dielectric | |
| CF-004 | Int1 (GND) | 1.38mil | | Internal Plane | GP1 |
| Core | | 39.00mil | Core-042 | Dielectric | |
| CF-004 | Int2 (PWR) | 1.38mil | | Internal Plane | GP2 |
| Prepreg | | 3.80mil | PP-013 | Dielectric | |
| Prepreg | | 3.10mil | PP-008 | Dielectric | |
| CF-004 | Bottom Layer | 1.38mil | | Signal | GBL |
| Nickel, Gold | Bottom Surface Finish | 0.16mil | | Surface Finish | |
| Surface Material | Bottom Solder | 1.00mil | SM-003 | Solder Mask | GBS |
| | Bottom Overlay | | | Legend | GBO |
| Total thickness: 60.63mil | | | | | |

| | | | | | | |
|--|--|-----------|------|---|---|--------------|
| UNLESS OTHERWISE SPECIFIED: | | NAME | DATE |  | | |
| DIMENSIONS ARE METRIC TOLERANCES: FRACTIONAL ± ANGULAR: MACH ± BEND ± TWO PLACE DECIMAL ± THREE PLACE DECIMAL ± INTERPRET GEOMETRIC TOLERANCING PER: MATERIAL FINISH DO NOT SCALE DRAWING | | DRAWN | HVR | | | 11/6/2024 |
| | | CHECKED | KK | 6/14/2023 | 710 Slater Road Morrisville | |
| | | ENG APPR. | | | Suite 200 NC 27703 | |
| | | MFG APPR. | | | TITLE | |
| | | Q.A. | | | QCIOT-ZSSC3123EVZ PMOD Fabrication | |
| | | COMMENTS: | | | | |
| | | | | SIZE | DWG. NO. | REVISION |
| | | | | B | QCIOT-ZSSC3123EVZ | A |
| | | | | SCALE: 1:1 | | SHEET 2 OF 3 |

THE INFORMATION CONTAINED IN THIS DRAWING IS THE SOLE PROPERTY OF RENESAS. ANY REPRODUCTION IN PART OR AS A WHOLE WITHOUT THE WRITTEN PERMISSION OF RENESAS IS PROHIBITED.

PROPRIETARY AND CONFIDENTIAL

A

B

C

D

A

B

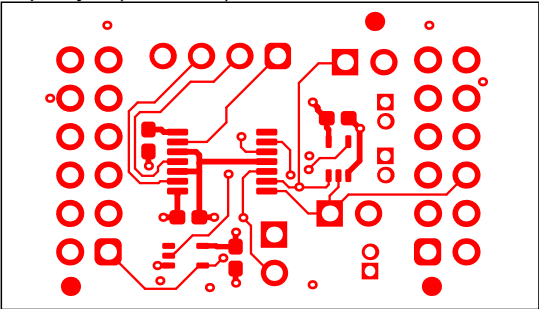
C

D

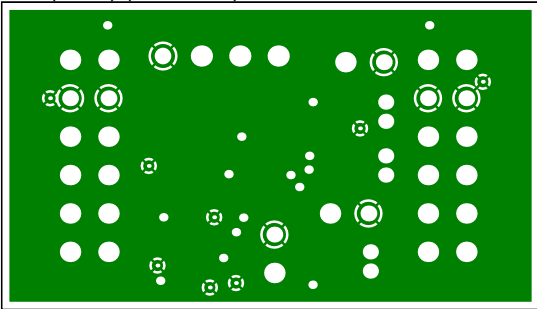
1

1

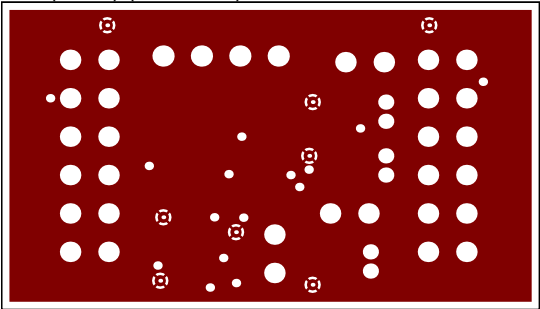
Top Layer (Scale 2:1)



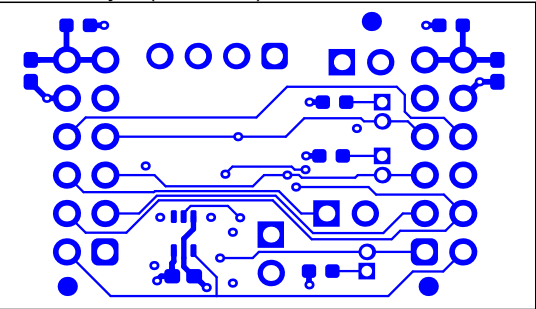
Int1 (GND) (Scale 2:1)



Int2 (PWR) (Scale 2:1)



Bottom Layer (Scale 2:1)




2

2

THE INFORMATION CONTAINED IN THIS DRAWING IS THE SOLE PROPERTY OF RENESAS. ANY REPRODUCTION IN PART OR AS A WHOLE WITHOUT THE WRITTEN PERMISSION OF RENESAS IS PROHIBITED.

PROPRIETARY AND CONFIDENTIAL

| | | | | | |
|--|-----------|------|-----------|---|--|
| UNLESS OTHERWISE SPECIFIED: | | NAME | DATE |  | |
| DIMENSIONS ARE METRIC TOLERANCES: FRACTIONAL± ANGULAR: MACH± BEND ± TWO PLACE DECIMAL ± THREE PLACE DECIMAL ± | DRAWN | HVR | 11/6/2024 | 710 Slater Road Morrisville Suite 200 NC 27703 | |
| | CHECKED | KK | 6/14/2023 | | |
| | ENG APPR. | | | TITLE QCIOT-ZSSC3123EVZ PMOD Fabrication | |
| | MFG APPR. | | | | |
| INTERPRET GEOMETRIC TOLERANCING PER: | Q.A. | | | SIZE DWG. NO. REVISION B QCIOT-ZSSC3123EVZ A SCALE: 1:1 SHEET 3 OF 3 | |
| MATERIAL | COMMENTS: | | | | |
| | | | | | |
| FINISH | | | | | |
| DO NOT SCALE DRAWING | | | | | |

DO NOT SCALE DRAWING

A

B

C

D